

All rights reserved by Kelsey Design Associates
 No part of this publication may be reproduced, stored in a retrieval system or transmitted in any form or by any means, without the prior permission of Kelsey Design Associates.
 Do not scale drawings. All dimensions to be checked on site and any discrepancies reported to Kelsey Design Associates.
 Architecture Interior Design Master Planning Project Management

SVP DRAINAGE TO M&E CONSULTANTS DETAILS

IT IS IMPERATIVE THAT FOR 182 MET FRAME STRUCTURAL WALLS WITH ONE RESILIENT BAR, THE BAR IS FIXED TO THE SIDE AS INDICATED ON THESE DRAWINGS IN ORDER TO ENSURE INTERNAL PLASTER TO PLASTER DIMENSIONS OF ROOMS ARE MAINTAINED, STUDY BEDROOMS MIN. 2.45M

ROOM ARRANGEMENT INDICATIVE ONLY - REFER TO KDA ROOM LAYOUT DRAWINGS FOR ALL ROOM LAYOUT DETAILS

CURRENT REVISION INDICATED BY CLOUD

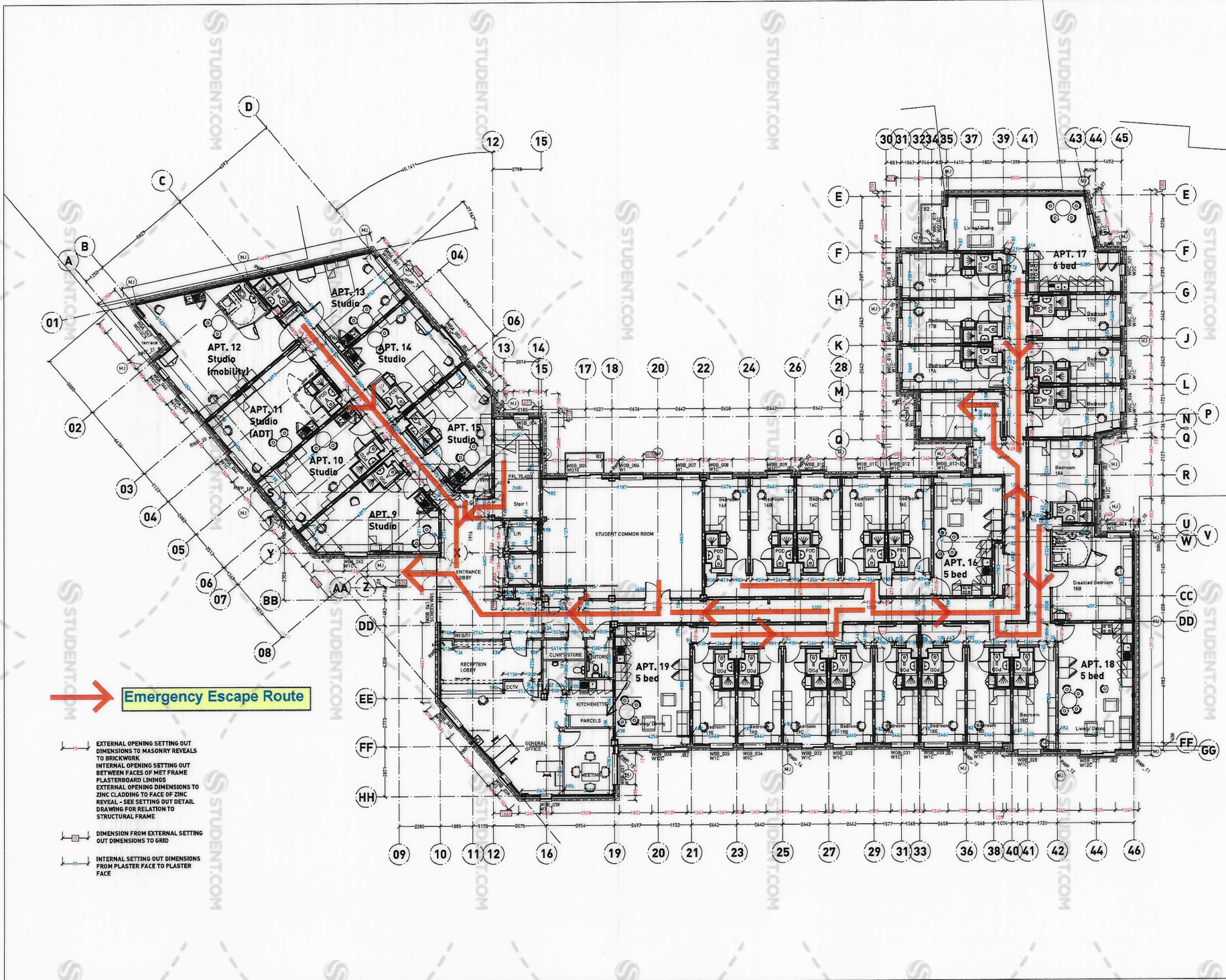
- Revision - Date**
- Rev A - 28/03/13 Internal Structural Opening Setting Out dimensions added, way to dimensions added, Wall 04114 increased to include 182 Met DD042-46 corrected to 182. Grid 17 corrected 100mm towards grid 18. Note regarding revision 182 Met added.
 - Rev B - 02/10/13 Internal construction. Staircase 1 rear wall and associated gridline P moved by 502mm to enable staircase walls to align as requested by AM. External floor level corrected to coincide with M&E consultants requirements. Grids 17 & 34 is structural Met Frame. Also wall between Apt 14 and Apt 45 corridor revised to be structural Met Frame. All as requested by PAW. Dry rise added to Stair 2.
 - Rev C - 09/03/13 The columns added, lift openings added, room numbers amended to have better reference, reception and APT (apartments) rooms amended as instructed, finish floor levels added, main entrance door repositioned, movement joints and staircase door added.
 - Rev D - 04/11/13 Narrow pod rear door revised to 1000mm & structural fire enclosure removed as instructed by contractor, position of final landing window to stair 1 revised, dry rise outlet box dims indicated, management area layout revised, door position to common room revised clear of bracing, balcony references, laundry extract rear added.
 - Rev E - 22/01/14 Reception lobby wall arrangement revised, fire curtains added, access corridor door to block A omitted, call as requested by fire consultant. Window referencing added.
 - Rev F - 28/02/14 Smoke vent added to Block A as required by B.Control, Apt 13 pod access door relocated, Apt 12 disabled bathroom repositioned, kitchen & studio layouts indicated, window W04_045 & adjacent brick pier revised to LPA requirement, dimension to gridline P corrected, additional plaster face one added to NB apartment.
 - Rev G - 10/03/14 Dims to studio entrance doors to Apts 13, 14 & 15 revised to 1000mm.
 - Rev H - 28/04/14 Window W04_047 to Apt 12 & adjacent brick pier revised to LPA requirement.
 - Rev I - 18/05/14 Door average revised to stair 1 and block A corridor to enable mechanical venting to Block A smoke shaft.

- M Movement joint position
- Will see to movement joints to S.Engs details
- PAW to approve all movement joint locations



project no: 12/03
 project title: Impact 2
 location: Edward Street SHEFFIELD
 drawing no: 003
 drawing title: LEVEL 0 PLAN

revision: 1
 date: Sept 2013
 drawn by: 1:100 @ A1
 approved by:
 drawing status: FOR CONSTRUCTION



Emergency Escape Route

- EXTERNAL OPENING SETTING OUT DIMENSIONS TO MASONRY REVEALS TO BRICKWORK
- INTERNAL OPENING SETTING OUT BETWEEN FACES OF MET FRAME
- PLASTERBOARD LININGS
- EXTERNAL OPENING DIMENSIONS TO ZINC CLADDING TO FACE OF ZINC REVEAL - SEE SETTING OUT DETAIL DRAWING FOR RELATION TO STRUCTURAL FRAME
- DIMENSION FROM EXTERNAL SETTING OUT DIMENSIONS TO GRID
- INTERNAL SETTING OUT DIMENSIONS FROM PLASTER FACE TO PLASTER FACE